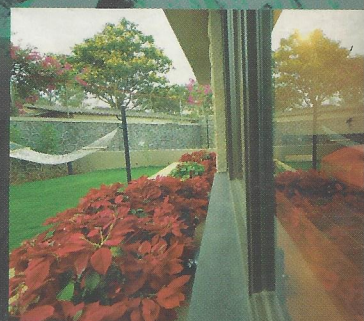


# j o u r n a l o f landscape a r c h i t e c t u r e

PRICE Rs. 75.00

SPRING | 2006

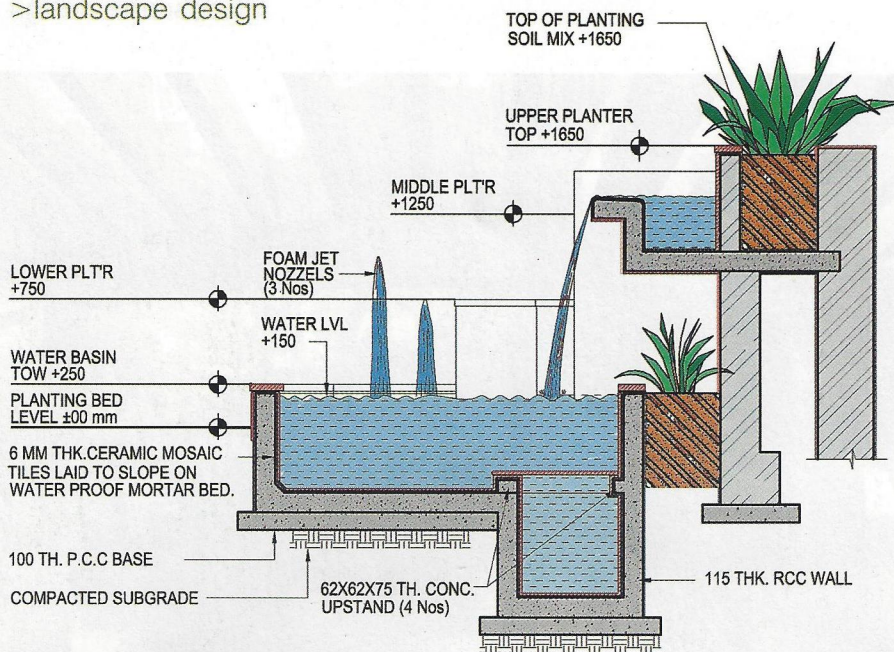
## Residential Landscapes



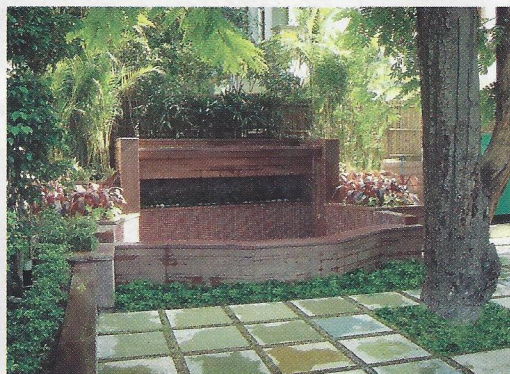
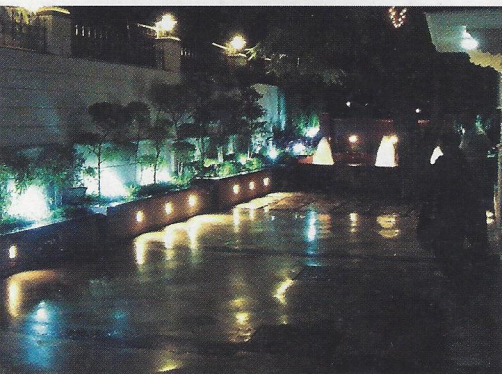
LA! 13

VOLUME FOUR | ISSUE ONE #





THUKRAL RESIDENCE. WATERFALL SECTION



THUKRAL RESIDENCE. DRIVEWAY VIEW AND WATERFALL.

## Thukral Residence New Delhi

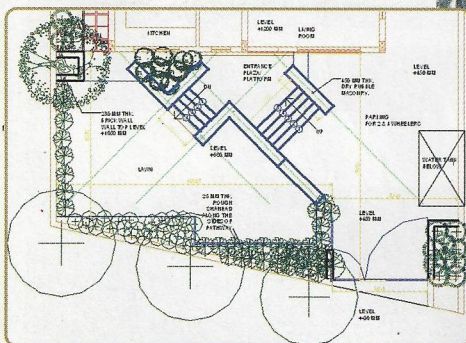
The site - a tight urban plot... To create interest in the driveway, planters of tapering widths were provided along the compound wall to offset the effect of monotonous narrowing space. At the end, a planter-cum-waterfall with foam jet nozzles was designed. Shade loving ferns are grown in the planter behind the transparent falling water sheet which when lit during night creates a striking effect. Ornamental foliage plants were proposed in waterfall planters, so that the end of the driveway looks beautiful even when the water sheet and foam jets are off.

Landscape Architect  
**Singhal Associates, New Delhi**

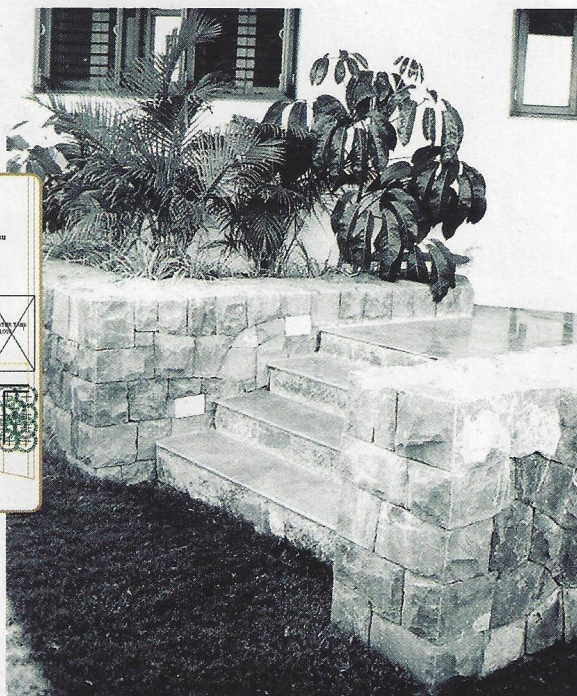
## Dr Bharuka Residence Aurangabad

How small a landscape design can be? How just a single element can suggest a good design attempt in a small space? The residence demanded definition of only the entrance with a lawn. The design developed in establishing two strong movement axis. The main wall which was suggesting the geometry at 45 degrees to the house wall was designed as a rough stone wall without joints. The design succeeds in establishing the entrance axis with the help of a wall, definition of the main door and the movement of user through it, till the lawn.

Landscape Architects  
**Yogendra A Ballal  
Aurangabad**



DR BARUKA RESIDENCE.  
ENTRANCE PLAN | ENTRANCE STEPS



Images, drawings and text courtesy the respective landscape architects.